

ERF 38398 MILNERTON:

situated in the City of Cape Town
 Administrative District
 Province Western Cape Cape

S.G. No.

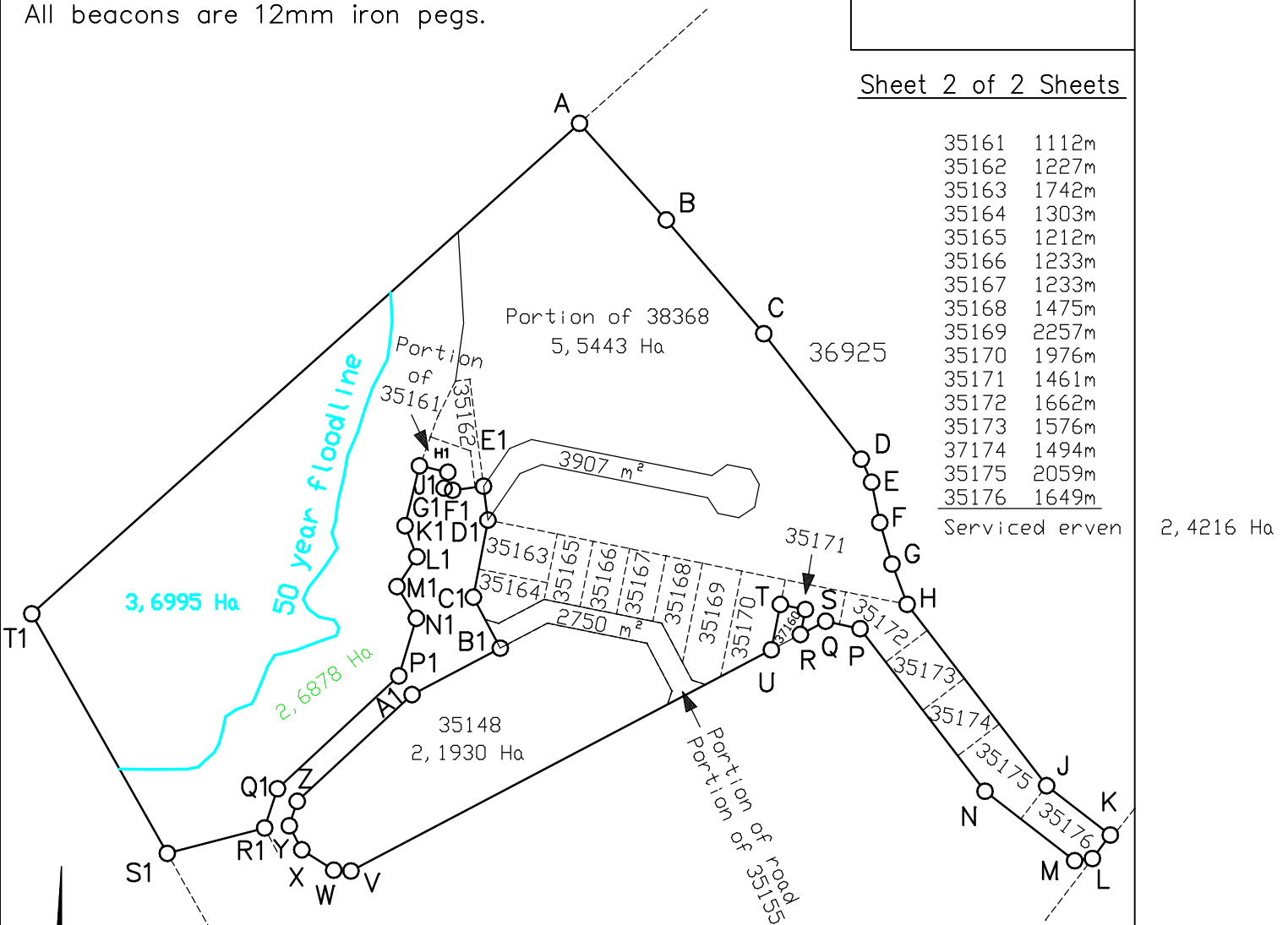
Approved

for Surveyor-General

BEACON DESCRIPTIONS:

All beacons are 12mm iron pegs.

Sheet 2 of 2 Sheets



35161	1112m
35162	1227m
35163	1742m
35164	1303m
35165	1212m
35166	1233m
35167	1233m
35168	1475m
35169	2257m
35170	1976m
35171	1461m
35172	1662m
35173	1576m
37174	1494m
35175	2059m
35176	1649m

Serviced erven 2,4216 Ha

- Erf 38368 - 5,5443 Ha
- Erf 35148 - 2,1930 Ha
- Serviced erven - 2,4216 Ha
- Public Space (Erf38368) - 2,6878 Ha
- Flood Area - 3,6995Ha**
- Existing road - 2750 m
- Built road - 3907 m

T N

Surveyed in December 2016
 by me,

A.J. VAN WYK
 Professional Land Surveyor No 0871